

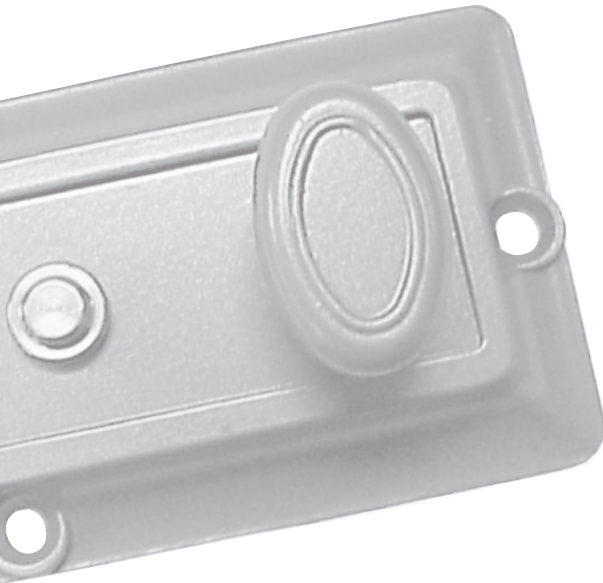


U.S. Dollars

Replacement Hardware, Accessories, and Locksmith Supplies

MSRP List Price

January 1, 2018



Auxiliary Locks	2
Replacement Rim Cylinders	2
Replacement Door Knobs and Accessories	3
Window and Door Locks	3
Cam Lock Kits	3
Thumbturn and Latching Locks	3
Tubular Cam Lock Kits	3
Specialty Locks	4
Key Accessories and Assortments	5
Desk and Drawer Locks	5
Removable Core Locks	5
Sliding Door Locks	5
Filing Cabinet Locks	6
Switch Locks	6
Show Case Locks	6
Disc Tumbler Kit	6
Cam Lock Kit	6
Picks and Wrenches	7
Pick Gun	7
Pick Kits	8
Locksmith Tools	8
Key Stamps	8
Pins (Colored) and Pinning Kit	9
Spindles	9
Strikes	9
Key Code Books	10
Miscellaneous Parts	10



Replacement Hardware, Accessories, and Locksmith Supplies

Auxiliary Locks

Product Number	Description	PKG	MSRP	
AD4605	Mortise Lockset	1	132.65	^
220-53-41	Night Latch - Box Pack	10	12.10	^
220-53-41 Less Cyl	Night latch - less Cylinder - Box Pack	10	9.15	^
220NHB Less Cyl	Night latch - No Hold Back - less Cylinders - Box Pack	10	9.15	^
220-53-51	Night Latch - Clam Shell Pack	5	13.65	^
530-53-41	Single Jimmy Proof - Box Pack	10	16.30	^
530-53-41 Less Cyl	Single Jimmy Proof - Less Cylinder - Box Pack	10	12.90	^
530-53-51	Single Jimmy Proof - Clam Shell Pack	5	17.85	^
535-53-41	Double Jimmy Proof - Box Pack	10	20.50	^
535SC-53-41	Double Jimmy Proof SC Keyway - Box Pack	10	20.50	^
535-53-51	Double Jimmy Proof - Clam Shell Pack	5	22.05	^
539-53-41 Less Cyl	Single Jimmy Proof - Less Cylinder - Flat Strike - Box Pack	10	12.85	^
545-53-41	Surface Deadlock - Box Pack	10	12.10	^
545-53-51	Surface Deadlock - Clam Shell Pack	5	13.65	^
590-04-51	Rim Lockset - Verticle Mount Function	5	23.10	^
591-04-51	Rim Lockset - Horizontal Mount Function	5	23.10	^
1800-28-41	Garage Door Lock - Less Cylinder	10	12.70	^

Replacement Rim Cylinders

Product Number	Description	PKG	MSRP	
605KW-04-51	5 Pin Zinc Rim Cylinder - Kwikset Keyway - 04 Finish - Keyed Different - Clam Shell Packed	5	5.95	^
605KW-04-41	5 Pin Zinc Rim Cylinder - Kwikset Keyway - 04 Finish - Keyed Different - Box Packed	10	5.55	^
605KW-04-41 KA2	5 Pin Zinc Rim Cylinder - Kwikset Keyway - 04 Finish - Keyed Alike X 2 - Box Packed	10	5.55	^
605KW-04-41 KA10	5 Pin Zinc Rim Cylinder - Kwikset Keyway - 04 Finish - Keyed Alike X 10 - Box Packed	10	5.55	^
605KW-04-41 KA12412	5 Pin Zinc Rim Cylinder - Kwikset Keyway - 04 Finish - All Keyed Alike - Box Packed	10	5.55	^
605KW-28-41	5 Pin Zinc Rim Cylinder - Kwikset Keyway - 28 Finish - Keyed Different - Box Packed	10	5.55	^
605KW-28-41 KA12415	5 Pin Zinc Rim Cylinder - Kwikset Keyway - 28 Finish - All Keyed Alike - Box Packed	10	5.55	^
605SC-04-51	5 Pin Zinc Rim Cylinder - Schlage Keyway - 04 Finish - Keyed Different - Clam Shell Packed	5	5.95	^
605SC-04-41	5 Pin Zinc Rim Cylinder - Schlage Keyway - 04 Finish - Keyed Different - Box Packed	10	5.55	^
605SC-04-41 KA2	5 Pin Zinc Rim Cylinder - Schlage Keyway - 04 Finish - Keyed Alike X 2 - Box Packed	10	5.55	^
605SC-04-41 KA10	5 Pin Zinc Rim Cylinder - Schlage Keyway - 04 Finish - Keyed Alike X 10 - Box Packed	10	5.55	^
605SC-04-41 KA12412	5 Pin Zinc Rim Cylinder - Schlage Keyway - 04 Finish - All Keyed Alike - Box Packed	10	5.55	^
605SC-04-41 KA13514	5 Pin Zinc Rim Cylinder - Schlage Keyway - 04 Finish - All Keyed Alike - Box Packed	10	5.55	^
605SC-28-41	5 Pin Zinc Rim Cylinder - Schlage Keyway - 28 Finish - Keyed Different - Box Packed	10	5.55	^
605SC-28-41 KA12415	5 Pin Zinc Rim Cylinder - Schlage Keyway - 28 Finish - All Keyed Alike - Box Packed	10	5.55	^

Replacement Hardware, Accessories, and Locksmith Supplies

Replacement Door Knobs and Accessories

Product Number	Description	PKG	MSRP	
197-03-51	Replacement knobs solid brass, blister carded	5	13.50	^
198-04-51	Replacement knobs brass plated, blister carded	5	6.30	^
199A-03-51	Replacement knobs clear, bright brass hardware, blister carded	5	12.25	^
AG30A	Replacement knobs clear, box packed, bright brass hardware	5	12.25	^
A403P	Replacement knobs solid brass, box pack	5	14.05	^
A410	Replacement knobs brass plated, box pack	5	7.10	^
211-03-51	Roses for 198, 199, A410, knobs, bright brass	5	3.35	^
212-03-51	Roses for 197 and A403P knobs, bright brass	5	5.35	^
213-04-51	Trim plates, satin brass	5	6.75	^
214-04-51	Bit key lock, satin brass	5	10.90	^
215-04-51	Bit key mortise lockset	5	25.20	^
216-03-51	Replacement latch for tubular locks	5	11.30	^
218A-03-51	Clear design tubular latchset, bright brass - 2 3/8" backset	5	17.55	^

Window and Door Locks

Product Number	Description	PKG	MSRP	
203-03-51	Keyed Window Sash Lock, Bright Brass	5	10.45	^
300-59-51	Heavy Duty Keyed Patio Door Lock, Satin Silver	5	14.30	^
201-03-51	Chain Door Guard, Bright Brass	5	9.00	^

Cam Lock Kits

Product Number	Description	PKG	MSRP	
3380-14-11 KD	Cam Lock Kit 3/8" (10 mm)	10	7.20	^
3120-14-11 KD	Cam Lock Kit 1/2" (13 mm)	10	7.20	^
3580-14-11 KD	Cam Lock Kit 5/8" (16 mm)	10	7.20	^
3780-14-11 KD	Cam Lock Kit 7/8" (22 mm)	10	7.20	^
3110-14-11 KD	Cam Lock Kit 1 1/8" (29 mm)	10	7.70	^
3130-14-11 KD	Cam Lock Kit 1 3/8" (35 mm)	10	7.70	^

Thumbturn and Latching Locks (Offset Cams Available - Additional .55 added to the List Price)

Product Number	Description	PKG	MSRP	
A5800	Thumbturn Cam Lock 5/8 (16 mm)	10	4.35	^
A7800-14-KD	Thumbturn Cam Lock 7/8 (22 mm)	10	4.35	^

Tubular Cam Lock Kits

Product Number	Description	PKG	MSRP	
1580-26-11	Tubular Cam Lock Kit 5/8 (16 mm)	10	17.60	^
1780-26-11	Tubular Cam Lock Kit 7/8 (22 mm)	10	17.80	^
1110-26-11	Tubular Cam Lock Kit 1 1/8 (29 mm)	10	18.40	^

Replacement Hardware, Accessories, and Locksmith Supplies

Specialty Locks Master Keying Available for 1700 Series - Additional 2.22 per lock. (Also available KA)

Product Number	Description	PKG	MSRP	
113-14-51	Mail Box Lock with Spring Clip	5	8.50	^
114-14-51	Mail Box Lock with Threaded Barrel	5	8.50	^
247-14-51	Showcase Lock	5	12.25	^
EXTRA MASTER KEYS	Extra Master Keys	-	1.25	^
EXTRA CHANGE KEYS	Extra Change Keys		1.25	^
GSW-CUT KEYS	Keys for Switch Lock	-	0.65	^
1600-04-11	Letter box lock for Auth., United, Florence Boxes	10	8.75	^
1625-04-11	Letter box lock with 1/2" bolt for Cole, Columbia, Amalgamated	10	9.60	^
1650-04-11	Letter box lock with Long ear for Cole, Columbia, Amalgamated	10	9.60	^
1675-04-11	Letter box lock for Couch Boxes	10	17.55	^
980-03-11	Cabinet/Drawer Lock	5	7.95	^
984-03-11	Cabinet/Drawer Lock Mortise Mount, Spring Latch	5	15.30	^
985-03-11	Cabinet/Drawer Lock Mortise Mount	5	15.30	^
990-14-11	Sliding Door Lock	5	15.30	^
1701-04-11 KD	Drawer Lock with 3/4" Horizontal Mount	10	11.00	^
1701-14-11 KD	Drawer Lock with 3/4" Horizontal Mount	10	11.00	^
1702-04-11 KD	Drawer Lock with 7/8" Horizontal Mount	10	11.00	^
1702-14-11 KD	Drawer Lock with 7/8" Horizontal Mount	10	11.00	^
1703-04-11 KD	Drawer Lock with 1 1/8" Horizontal Mount	10	11.00	^
1703-14-11 KD	Drawer Lock with 1 1/8" Horizontal Mount	10	11.00	^
1751-04-11 KD	Drawer Lock with 3/4" Vertical Mount	10	11.00	^
1751-14-11 KD	Drawer Lock with 3/4" Vertical Mount	10	11.00	^
1752-04-11 KD	Drawer Lock with 7/8" Vertical Mount	10	11.00	^
1752-14-11 KD	Drawer Lock with 7/8" Vertical Mount	10	11.00	^
1753-04-11 KD	Drawer Lock with 1 1/8" Vertical Mount	10	11.00	^
1753-14-11 KD	Drawer Lock with 1 1/8" Vertical Mount	10	11.00	^

Replacement Hardware, Accessories, and Locksmith Supplies

Key Accessories & Assortments

Product Number	Description	PKG	MSRP	
1KRA	Key Ring Asst	1	52.85	^
PT1A	Colored Key Tag Assortment	1	71.40	^
232-00-51	Magnetic Key Case - Large	5	3.75	^
261-00-8X	Key Ring (16mm)	1	8.10	^
262-00-8X	Key Ring (20mm)	1	9.90	^
263-00-8X	Key Ring (22mm)	1	11.40	^
264-00-8X	Key Ring (25mm)	1	12.85	^
265-00-8X	Key Ring (30mm)	1	17.85	^
266-00-8X	Key Ring (32mm)	1	10.80	^
267-00-8X	Key Ring (38mm)	1	15.05	^
268-00-8X	Key Ring (51mm)	1	28.55	^
765G-00-8X	Spring Steel Key Ring (7051A) (15mm)	1,000	19.45	^

Desk and Drawer Locks Master Keying Available - Additional 1.30 added to the List Price

Product Number	Description	PKG	MSRP	
974-14-11	Desk lock	10	7.25	^
975-14-11	Desk lock - Removable Core	10	7.25	^
984-03-11	Half mortise lock - spring lock	10	10.10	^
985-03-11	Drawer lock - mortise mount, DB	10	10.30	^
980-03-11	7/8 Drawer lock with 620 cam	10	7.10	^
980-14-11	7/8 Drawer lock with 620 cam	10	7.10	^
982-03-11	7/8 Drawer lock with 608 cam	10	7.10	^
982-14-11	7/8 Drawer lock with 608 cam	10	7.10	^
986-14-11	1-1/8 Drawer lock with 620 cam	10	7.10	^

Removable Core Locks

Master Keying available - Additional 1.30 added to List Price

Offset Cams available - Additional .55 added to List Price

Product Number	Description	PKG	MSRP	
970-14-11 KD	Drawer Lock 13/16 (21mm)	10	6.65	^

Sliding Door Locks

Master Keying available - Additional 1.30 added to List Price

Product Number	Description	PKG	MSRP	
990-04-11 KD	Sliding Door Lock - Satin Brass	10	10.30	^
990-14-11 KD	Sliding Door Lock - Bright Nickel	10	10.30	^

Replacement Hardware, Accessories, and Locksmith Supplies

Filing Cabinet Locks

Product Number	Description	PKG	MSRP	
4700-14-11 KD	Filing Cabinet Lock - 1 3/4" (44 mm) - Round Bolt	10	10.65	^
4701-14-11 KD	Filing Cabinet Lock - 2" (51 mm) - Rectangular Bolt	10	10.65	^

Switch Locks

Product Number	Description	PKG	MSRP	
GSW1201-26-11	Switch Lock – 1 position key removal	10	24.75	^
GSW1203-26-11	Switch Lock – 2 position key removal	10	24.75	^
GSW1211-26-11	Switch Lock – Spring back momentary contact	10	15.55	^

Show Case Locks

Master Keying available - Additional 1.30 added to List Price

Product Number	Description	PKG	MSRP	
247-14-11 KD	Show Case Lock	10	11.95	^

Disc Tumbler Kit

Product Number	Description	PKG	MSRP	
SL18602-01-65-8X	Disc Tumbler #1	100	13.00	^
SL18602-03-65-8X	Disc Tumbler #3	100	12.00	^
SL18602-04-65-8X	Disc Tumbler #4	100	13.00	^
SL18602-05-65-8X	Disc Tumbler #5	100	13.00	^
PD1001-00-8X	Disc Tumbler Spring	100	4.35	^
818-11	Plastic Case	1	10.55	^
818A-00-8X	Wafer Keying Kit (N54G Keyway)	1	53.80	^
824-01	#1 Wafer	1	1.35	^
824-02	#2 Wafer	1	1.35	^
824-04	#4 Wafer	1	1.35	^
824-05	#5 Wafer	1	1.35	^

Cam Lock Kit

Product Number	Description	MSRP	
782-00-8X	"Cam Lock Kit (for N54G Single Bitted Keyway cam locks) Includes: 40 locks, 40 cams, 40 assorted spacers, 10 wood washers, 10 rings, 80 stop washers, 10 attaching plates, 40 screws and 40 nuts in a compartment durable traveling case."	296.20	^

Replacement Hardware, Accessories, and Locksmith Supplies

Picks and Wrenches

Product Number	Description	PKG	MSRP	
901-01	Ball Pick (No Handle)	5	2.00	^
901-02	Ball Pick (No Handle)	5	2.00	^
901-03	Ball Pick (No Handle)	5	2.00	^
901-04	Ball Pick (No Handle)	5	2.00	^
901-05	Rake Pick (No Handle)	5	2.00	^
901-06	Rake Pick (No Handle)	5	2.00	^
901-07	Hook Pick (No Handle)	5	2.00	^
901-08	Hook Pick (No Handle)	5	2.00	^
901-09	Diamond Pick (No Handle)	5	2.00	^
901-10	Diamond Pick (No Handle)	5	2.00	^
901-11	Diamond Pick (No Handle)	5	2.00	^
901-12	Extractor Pick (No Handle)	5	2.00	^
901-13	Rake Pick (No Handle)	5	2.00	^
901-14	Rake Pick (No Handle)	5	2.00	^
901-15	Rake Pick (No Handle)	5	2.00	^
901-16	Combination Pick (No Handle)	5	2.00	^
901-17	Combination Pick (No Handle)	5	2.00	^
901-19	Diamond Pick (No Handle)	5	2.00	^
901-20	Ball Pick (No Handle)	5	2.00	^
901-21	Rake Pick (No Handle)	5	2.00	^
901-22	Hook Pick (No Handle)	5	2.00	^
901-23	Reader Pick (No Handle)	5	2.00	^
901-24	Extractor Pick (Available In Wood Hdle. Only)	5	4.20	^
902-01	Tension Wrench (Wishbone)	5	4.90	^
902-02	Tension Wrench (Double Sided)	5	2.50	^
902-03	Medium Tension Wrench 5 3/8 X 1/8	5	2.50	^
902-04	Light Tension Wrench 5 3/8 X 3/32	5	2.85	^
902-05	Medium Tension Wrench 4 1/2 X 1/8	5	2.85	^
902-06	Light Tension Wrench 4 1/2 X 3/32	5	2.85	^
902-07	Medium Tension Wrench 3 1/4 X 1/8	5	2.85	^
902-08	Light Tension Wrench 3 1/4 X 3/32	5	2.85	^
902-09	Medium Tension Wrench 3 1/4 X 1/8	5	2.85	^
902-10	Tension Wrench (Letter Box)	5	2.85	^
902-11	Tension Wrench (Letter Box)	5	2.85	^
902-13	Tw-18 Heavy Tenison Wrench	5	2.85	^
902-12	Tw-20 Heavy Tenison Wrench	5	2.85	^
903-01	Pack Of 5 Unipix Handles	5	2.85	^
903-01	Pack Of 5 Unipix Handles	5	2.85	^

Pick Gun

Product Number	Description	PKG	MSRP	
827-00-8X	Pistol Pick. Includes (2) Complete Sets Of Extra Springs, (3) Straight Picks, (3) Angle Picks, (2) Tension Wrench	1	61.50	^
827-01	Replacement Straight Pick	5	2.20	^
827-02	Replacment Angle Pick	5	2.20	^

Replacement Hardware, Accessories, and Locksmith Supplies

Pick Kits

Product Number	Description	PKG	MSRP	
825	The Expert. Contains (17) Picks and (11) Tension Wrenches, (2) 903-01 Handles. Leather Case	1	89.15	^
825A	The Journeyman. Contains (4) Picks, (4) Tension Wrenches, (1) 903-01 Handle and Case	1	31.20	^
825B	The Master. Contains (11) Picks, (5) Tension Wrenches, (1) 903-01 Handle and Case	1	57.55	^
825D	The Artisan. Contains (9) Picks, (5) Tension Wrenches, (1) 903-01 Handle and Case	1	34.10	^
825E	Extractor Kit. Contains (2) Extractor Picks, (1) 903-01 Handle and Case	1	11.00	^
825F	The Magnum. Contains (24) Picks and (13) Tension Wrenches, (2) 903-01 Handles. Leather Case	1	99.60	^

Locksmith Tools

Product Number	Description	PKG	MSRP	
898-00-51	Plug Holder/Follower Set	1	226.50	^
891-00-51	Following Tool Set	1	51.00	^
887-00-51	Following Tool (.500)	1	17.70	^
888-00-51	Following Tool (.495)	1	14.45	^
889-00-51	Following Tool (.395)	1	13.75	^
890-00-51	Following Tool (.550)	1	17.70	^
897-00-51	Plug Holder Set	1	90.85	^
893-00-51	Plug Holder (.510)	1	26.45	^
894-00-51	Plug Holder (.500)	1	26.45	^
895-00-51	Plug Holder (.405)	1	26.45	^
896-00-51	Plug Holder (.550)	1	26.45	^
899-00-51	Pin Tumbler Tweezer	1	15.75	^
843-01	Following Tool For Ilco 605 Die Cast Cylinder	1	12.80	^
830-00-11	Plug Holder, Aluminum (For Standard .510 Plugs)	1	4.85	^
880-00-51	Key Deburrer	1	89.60	^
884-00-51	Micro-Dial Caliper	1	59.00	^
879-00-51	Pin & Plug Deburring Tool	1	34.30	^
786-00-41	Multiple Plug Holder	1	62.00	^
815-00-51	Brush (6 In.)	1	61.35	^
816-00-51	Brush (4 In.)	1	18.90	^
ESP PP-1004	910 Punch Marker	1	4.00	^
PA249-00-8X	Starter Kit - Includes a 797 Color Pin Kit, Lock Picking Set, Key Extractors, Plug Holder, Follower Set, Shim Stock and Key Depth Gauge	1	566.25	^
PA249	Key Depth Gauge	1	9.05	^
746-00-8X	Mortise and Rim Tumbler Springs	150/BAG	5.90	^
746A-00-8X	Spring (#50)	50	5.90	^

Key Stamps

Product Number	Description	PKG	MSRP	
802	Hand Stamping Die. For Stamping Keys, Tags, Etc. For Advertising and Identification. Customer Engraved on Tool Steel and Tempered. 1st Line: Name (13 Characters Max) 2nd Line: Phone No. or Address, Etc. (13 Characters Max)	100	13.00	^
802M	"Master" Stamping Die (Hand Stamp)	100	12.00	^
802DND	"Do Not Duplicate" Stamp	100	13.00	^

Replacement Hardware, Accessories, and Locksmith Supplies

Pins (Colored) and Pinning Kit

Product Number	Description	PKG	MSRP	
797-00-8X	.003 Increment Color Pin Kit Includes 40 Top Pins and 79 Bottom Pins	1	349.45	^
T.010 thru T.200	.005 Increment Replacement Top Pins	150/bag	3.25	^
B.165 thru B360	.005 Increment Replacement Bottom Pins	150/bag	3.25	^
T.024 thru T.141	.003 Increment Replacement Top Pins	150/bag	3.25	^
B.126 thru B360	.003 Increment Replacement Bottom Pins	150/bag	3.25	^

Spindles

Product Number	Description	PKG	MSRP	
760-01	Spindle Cap	10	21.70	^
760-02	Headless Screw, Brass - 1/4 - 20 X 5/16 (8mm X 6mm-20)	100	105.50	^
760-03	Headless Screw, Brass Plated Steel - 1/4 - 20 X 3/8 (10mm X 6mm-20)	100	105.60	^
760-04	Oval Head Screw, Brass Plated - Steel (10mm X 9-24)	100	19.50	^
760-05	Straight Spindle 9/32 X 3 5/8 #20 (7mm X 92mm)	10	12.50	^
760-06	Straight Spindle 9/32 X 4 1/2 #20 (7mm X 114mm)	10	3.95	^
760-07	Swivel Spindle 9/32 X 4 1/2 #20 (7mm X 114mm)	10	6.55	^
760-08	Straight Spindle 9/32 X 4 1/2 #20 (7mm X 114mm)	10	6.55	^
760-09	Swivel Spindle 9/32 X 5 #20 (7mm X 127mm)	10	9.85	^
760-10	Swivel Spindle 9/32 X 5 1/4 #20 (7mm X 133mm)	10	9.85	^
760-11	Split Spindle 9/32 X 3 1/4 X 20 (7mm X 83mm)	10	6.20	^
760-12	Universal Spindle 9/32 X 5 #20 With Spindle Caps For 3/8 Center (7mm X 127mm)	10	9.85	^
760-13	Straight Spindle 9/32 X 3 5/8 #18 (7mm X 92mm)	10	6.60	^
760-14	Straight Spindle 9/32 X 4 1/2 #18 (7mm X 114mm)	10	6.60	^
760-15	Swivel Spindle 9/32 X 4 1/2 #18 (7mm X 114mm)	10	9.85	^
760-16	Swivel Spindle 9/32 X 5 #18 (7mm X 127mm)	10	9.85	^
760-17	Swivel Spindle 9/32 X 5 1/4 #18 (7mm X 133mm)	10	9.85	^
760-18	Split Spindle 9/32 X 3 1/4 #18 (7mm X 83mm)	10	9.15	^
760-19	Universal Spindle 9/32 X 5 #18 With Spindle Caps For 3/8 Center (7mm X 127mm)	10	9.85	^
760-20	Headless Screw, Brass Plated - Steel 1/4 - 28 X 5/16	100	35.95	^
760-20	Headless Screw, Brass Plated - Steel 1/4 - 28 X 5/16	100	35.95	^

Strikes

Product Number	Description	PKG	MSRP	
774F-03-11	Mortise Lock Strike	10	18.90	^
774G-67-40	Night Light Strike (220 Series)	10	5.80	^
733-03-11	Bit Key Lock Strike	1	4.20	^
744-03-11	Bit Key Lock Strike (Ilco 215)	10	3.85	^
774-03-11	Tubular and Cylindrical Strike	1	1.65	^

Replacement Hardware, Accessories, and Locksmith Supplies

Key Code Books

Product Number	Description	PKG	MSRP	
ACB-FO	Ford Key Codes	1	22.50	^
ACB-HO	Honda Key Codes	1	22.50	^
ACB-CHY	Chy/Amc Key Codes	1	22.50	^
ACB-TO	Toyota Key Codes	1	22.50	^
ACB-HYU	Hyundai Key Codes	1	22.50	^
ACB-NIS	Nissan Key Codes	1	22.50	^
ACB-MPV	Mazda Van Key Codes	1	22.50	^
ACB-TSK	Tracker Sidekick Codes	1	22.50	^
ACB-STM	Geo Storm Codes	1	22.50	^
ACB-SAT	GM Saturn Codes	1	22.50	^
ACB-ELN	Elantra Codes	1	22.50	^
ACB-IZU	Isuzu Key Codes	1	22.50	^
ACB-TO-93	Toyota Codes	1	22.50	^
ACB-GM-94	GM-94 Key Codes	1	22.50	^
ACB-HYU-94	Hyundai-94 Key Codes	1	22.50	^
ACB-HYU-95	Hyundai-95 Key Codes	1	22.50	^
ACB-FO-96	Ford-96 Key Codes	1	22.50	^
ACB-NIS-96	Nissan-96 Key Codes	1	22.50	^
ACB-SUB-98	Sub-98 Key Codes	1	22.50	^
ACB-KIA	Kia Key Codes	1	22.50	^
ACB-GM2000	GM2000 Key Codes	1	22.50	^
ACB-SAT/GM-03	Sat/GM-03 Key Codes	1	22.50	^
ACB-KIARIOCINCO	Kiariocinco Key Codes	1	22.50	^
ACB-KIA05	Kia 05 Key Codes	1	22.50	^
ACB-HYU3	Hyundai U3 Key Codes	1	22.50	^

Miscellaneous Parts

Product Number	Description	PKG	MSRP	
MKS-1 CD	Master Key Selector CD	1	35.30	^
1402-04	Frangible Shackle Padlock - One Key Fits All	1	18.00	

