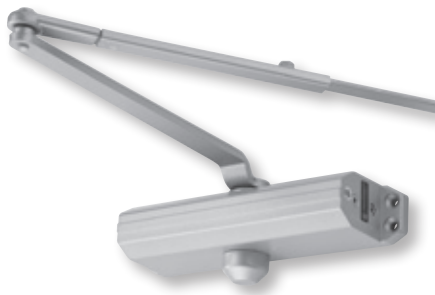


# FALCON

## Price book 6

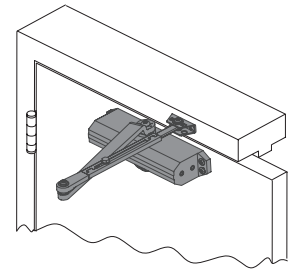
Effective July 7, 2018 • Rev. 12/18



## SC60/SC60A Series

Light-Medium Duty

Model	Arm Type	Shipping Weight	AL (689) DKB (695) BR (696) MTBK (622) <sup>1</sup>
SC61/SC61A	RwPA	7	166
SC61/SC61A	HwPA	7	189
SC61/SC61A	HDPA <sup>1</sup>	7	189
SC61/SC61A	DS	9	209
SC61/SC61A	DSHO <sup>1</sup>	9	232
SC61/SC61A	SS <sup>1</sup>	9	276
SC61/SC61A	SSHO <sup>1</sup>	9	294



SC60/60A Series

**REFERENCE NOTES:**

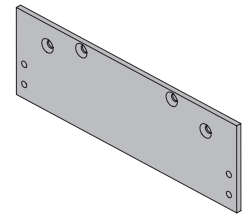
- 1) SC61 HD, DS/HO, SS, and SS/HO arms are not available in matte black. All other matte black will transition to SC60A in Q3 of 2017.
- 2) SC61/SC61A ships standard as LESS cover.
- 3) SC61/SC61A is fully adjustable 1-5

### Closer Options

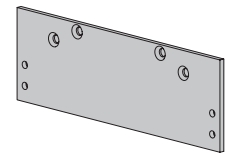
Suffix	Description	List Adder
SLIM	SLIM Cover	15

### Closer Parts and Accessories

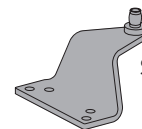
Model	Description	Shipping Weight	List
SC61/SC61A-3071	Standard Cylinder	9	103
SC61-3071DEL	Delay Cylinder <sup>1</sup>	9	137
SC60/SC60A-72	Slim Cover	1	123
SC60/SC60A-3077/PA	Regular Arm w/ PA Bracket	3	64
SC60/SC60A-3049/PA	Hold Open Arm w/ PA Bracket	3	87
SC60/SC60A-3077HD	Heavy Duty Parallel Arm <sup>1</sup>	3	87
SC60/SC60A-3077DS	Dead Stop Parallel Arm	5	106
SC60/SC60A-3049DS	Hold Open Dead Stop Parallel Arm <sup>1</sup>	5	129
SC60/SC60A-3077SS	Spring N Stop Arm <sup>1</sup>	5	173
SC60/SC60A-3049SS	Hold Open Spring N Stop Arm <sup>1</sup>	5	192
SC60/SC60A-18	Mounting Plate - Top Jamb	2	33
SC60/SC60A-18PA	Mounting Plate - Push Side	2	33
SC60/SC60A-30	Cush Shoe Support	1	21
SC60/SC60A-61	Blade Stop Spacer	1	24
SC60/SC60A-62A	Offset Auxiliary Shoe	1	28
043156626427	SC60A Standard Screw Pack AL Finish replacing 42824		10
043156626465	SC60A Standard Screw Pack DKB Finish replacing 42833		10
043156626441	SC60A Standard Screw Pack BR Finish replacing 42840		10
043156626434	SC60A/80A Screw Pack for Affixed Parallel Arm Shoe (AL) - in addition to 043156626427		10
043156626472	SC60A/80A Screw Pack for Affixed Parallel Arm Shoe (DKB) - in addition to 043156626465		10
043156626458	SC60A/80A Screw Pack for Affixed Parallel Arm Shoe (BR) - in addition to 043156626441		10
043156618422	SC60A/80A PINION CAP (AL)		6
043156618446	SC60A/80A PINION CAP (DKB)		6
043156618439	SC60A/80A PINION CAP (BR)		6
43924	SC60/80/90 PINION CAP (MTBK)		6



SC60A-18



SC60A-18PA



SC60A-62A

**REFERENCE NOTES:**

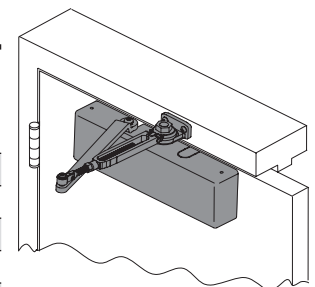
- 1) SC61 delay action, HD, DS/HO, SS, and SS/HO arms are not available in matte black.
- 2) Delay Action will transition to SC61A end of 2017.
- 3) Matte Black finish will transition to SC61A in Q3 2017.
- 4) Matte Black and Dark Bronze Closers share the same screw finish.

Prices subject to change without notice

**SC70/SC70A Series**

Heavy Duty

Model	Arm Type	Shipping Weight	AL (689) DKB (695) BR(696) MTBK (622) <sup>1</sup>
SC71/SC71A	RwPA	10	327
SC71/SC71A	HwPA	10	350
SC71/SC71A	HDBA	11	350
SC71/SC71A	FA <sup>1</sup>	11	367
SC71/SC71A	FAHO <sup>1</sup>	11	391
SC71/SC71A	DS	11	369
SC71/SC71A	DSHO <sup>1</sup>	12	393
SC71/SC71A	SS <sup>1</sup>	12	437
SC71/SC71A	SSHO <sup>1</sup>	12	455



SC70/SC70A Series

**REFERENCE NOTES:**

- 1) SC71 FA, FA/HO, DS/HO, SS, and SS/HO are not available in matte black. All other matte black will transition to SC71A in Q3 2017.
- 2) SC71 ships standard with a FULL Cover.
- 3) SC71 is fully adjustable 1-6

**Closer Options**

Suffix	Description	List Adder
DEL <sup>1</sup>	Delayed Action Cylinder	30

**REFERENCE NOTE:**

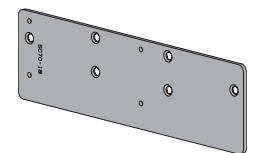
- 1) Delay Action is not available in matte black and will transition to SC71A end of 2017

**Closer Parts and Accessories**

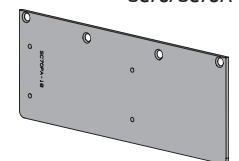
Model	Description	Shipping Weight	List
SC71/SC71A-3071	Standard Cylinder	12	246
SC71/SC71A-3071DEL	Delay Cylinder <sup>1</sup>	12	280
SC70/SC70A-72	FULL Cover	1	17
SC70/SC70A-3077/PA	Regular Arm w/ PA Bracket	3	64
SC70/SC70A-3049/PA	Hold Open Arm w/ PA Bracket	3	87
SC70/SC70A-3077HD	Heavy Duty Parallel Arm	3	87
SC70/SC70A-3077FA	Forged Parallel Arm <sup>1</sup>	3	104
SC70/SC70A-3049FA	Hold Open Forged Parallel Arm <sup>1</sup>	3	127
SC70/SC70A-3077DS	Dead Stop Parallel Arm	5	106
SC70/SC70A-3049DS	Hold Open Dead Stop Parallel Arm <sup>1</sup>	5	129
SC70/SC70A-3077SS	Spring N Stop Arm <sup>1</sup>	5	173
SC70/SC70A-3049SS	Hold Open Spring N Stop Arm <sup>1</sup>	5	192
SC70/SC70A-18	Narrow Frame Back Plate	3	56
SC70/SC70A-18PA	Narrow Top Rail Drop Plate	4	56
SC70/SC70A-30	Cush Shoe Support	1	21
SC70/SC70A-61	Blade Stop Spacer	1	24
SC70/SC70A-62A	Offset Auxiliary Shoe	1	28
42992	SC70 Screw Pack RW/PA and HW/PA Arms (AL)		10
43096	SC70 Screw Pack RW/PA and HW/PA Arms (DRKB)		10
43097	SC70 Screw Pack RW/PA and HW/PA Arms (BR)		10
43065	SC70 Screw Pack for Affixed Parallel Arm Shoe (AL)		10
43100	SC70 Screw Pack for Affixed Parallel Arm Shoe (DRK)		10
43101	SC70 Screw Pack for Affixed Parallel Arm Shoe (BR)		10

**REFERENCE NOTE:**

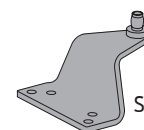
- 1) SC71/SC71A FA, FA/HO, DS/HO, SS, and SS/HO arms are not available in matte black.
- 2) Matte Black will transition to SC71A in Q3 2017.
- 3) Delay Action will transition to SC71A by end of 2017.
- 4) Matte Black and Dark Bronze Closers share the same screw finish.



SC70/SC70A-18



SC70/SC70A-18PA



SC70/SC70A-62A

CLOSERS

Surface Mount / Mechanical

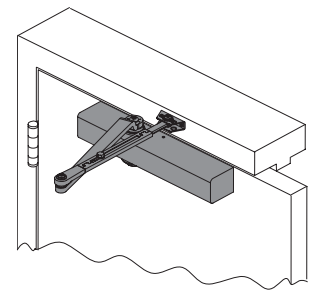
SC70/SC70A

Prices subject to change without notice

## SC80/SC80A Series

Medium Duty

Model	Arm Type	Shipping Weight	AL (689) DKB (695) BR (696) MTBK (622) <sup>1</sup>
SC81/SC81A	RwPA	8	209
SC81/SC81A	HwPA	8	231
SC81/SC81A	HDPA <sup>1</sup>	10	231
SC81/SC81A	DS	10	250
SC81/SC81A	DSHO <sup>1</sup>	10	273
SC81/SC81A	SS <sup>1</sup>	10	318
SC81/SC81A	SSHO <sup>1</sup>	10	336



SC80/SC80A  
(w/ full cover shown)

**REFERENCE NOTES:**

- 1) SC81 delay action, HD, DS/HO, SS, and SS/HO arms are not available in matte black. All other matte black will transition to SC81A in Q3 of 2017.
- 2) SC81/SC81A ships standard with a SLIM Cover.
- 3) SC81/SC81A is fully adjustable 1-6

### Closer Options

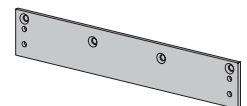
Suffix	Description	List Adder
FC	FULL Cover	5
DEL <sup>1</sup>	Delayed Action Cylinder	30

**REFERENCE NOTE:**

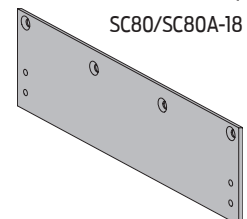
- 1) Delay action is not available in matte black and will transition to SC81A end of Q3 2017.

### Closer Parts and Accessories

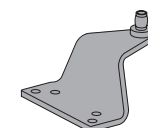
Model	Description	Shipping Weight	List
SC81/SC81A-3071	Standard Cylinder	10	134
SC81-3071DEL	Delay Cylinder <sup>1</sup>	10	168
SC80/SC80A-72	Slim Cover	1	12
SC80/SC81A-72FC	FULL Cover	1	17
SC80/SC81A-3077/PA	Regular Arm w/ PA Bracket	3	64
SC80/SC81A-3049/PA	Hold Open Arm w/ PA Bracket	3	87
SC80/SC81A-3077HD	Heavy Duty Parallel Arm <sup>1</sup>	3	87
SC80/SC81A-3077DS	Dead Stop Parallel Arm	5	106
SC80/SC81A-3049DS	Hold Open Dead Stop Parallel Arm <sup>1</sup>	5	129
SC80/SC81A-3077SS	Spring N Stop Arm <sup>1</sup>	5	173
SC80/SC81A-3049SS	Hold Open Spring N Stop Arm <sup>1</sup>	5	192
SC80/SC81A-18	Mounting Plate - Top Jamb	2	33
SC80/SC81A-18FC	Mounting Plate - Top Jamb for FULL Cover	2	33
SC80/SC81A-18PA	Mounting Plate - PA	2	33
SC80/SC81A-18PAFC	Mounting Plate - PA for FULL Cover	2	33
SC80/SC81A-30	Cush Shoe Support	1	21
SC80/SC81A-61	Blade Stop Spacer	1	24
SC80/SC81A-62A	Offset Auxiliary Shoe	1	28
043156626427	SC80A Standard Screw Pack AL Finish replacing 42824		10
043156626465	SC80A Standard Screw Pack DKB Finish replacing 42833		10
043156626441	SC80A Standard Screw Pack BR Finish replacing 42840		10
043156626434	SC60A/80A Screw Pack for Affixed Parallel Arm Shoe (AL) - in addition to 043156626427		10
043156626472	SC60A/80A Screw Pack for Affixed Parallel Arm Shoe (DKB) - in addition to 043156626465		10
043156626458	SC60A/80A Screw Pack for Affixed Parallel Arm Shoe (BR) - in addition to 043156626441		10
043156618422	SC60A/80A PINION CAP (AL)		6
043156618446	SC60A/80A PINION CAP (DKB)		6
043156618439	SC60A/80A PINION CAP (BR)		6
43924	SC60/80/90 PINION CAP (MTBK)		6



SC80/SC80A-18



SC80/SC80A-18PA



SC80/SC80 A-62A

**REFERENCE NOTE:**

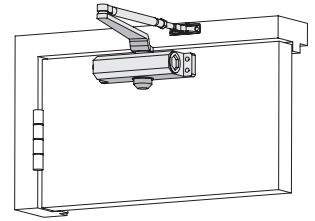
- 1) SC80A delay action, HD, DS/HO, SS, and SS/HO arms are not available in matte black.
- 2) Delay action will transition to SC81A by end of 2017.
- 3) Matte Black finish will transition to SC81A in Q3 2017.
- 4) Matte Black and Dark Bronze Closers share the same screw finish.

Prices subject to change without notice

**SC90/SC90A Series**

Light- Residential Duty

Model	Arm Type	Size	Shipping Weight	AL (689) DKB (695) BR* (696)
SC91/SC91A	RwPA	1	5	122
SC91/SC91A	HwPA	1	5	144
SC93/SC93A	RwPA	3	5	122
SC93	HwPA	3	5	144
SC94/SC94A	RwPA	4	5	122
SC94	HwPA	4	5	144



SC90/SC90A Series  
(SC91 shown)

**REFERENCE NOTES:**

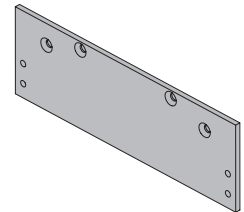
- 1) SC90 series ship standard as LESS Cover.
- 2) \*Brass will not be available with SC91A/SC93A/SC94A.
- 3) Less Back Check option is available on SC91 RWPA AL, SC93 RWPA AL, SC94 RWPA AL & DKB at \$10 Less List

**Closer Options**

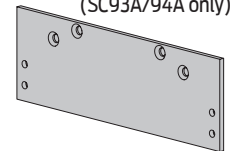
Suffix	Description	List Adder
STD	Standard Cover (Only fits 93 and 94 models)	17

**Closer Parts and Accessories**

Model	Description	Shipping Weight	List
SC90/SC90A-18	Mounting Plate - Top Jamb	2	33
SC90/SC90A-18PA	Mounting Plate - Push Side	2	33
42901	SC60/80/90 PINION CAP (ALUM)		6
42902	SC60/80/90 PINION CAP (DRKBRZ)		6
42903	SC60/80/90 PINION CAP (BRASS)		6



SC90/SC90A-18  
(SC93A/94A only)



SC90/SC90A-18PA  
(SC93A/94A only)

**CLOSERS**

Surface Mount /  
Mechanical

SC90/SC90A

Prices subject to change without notice