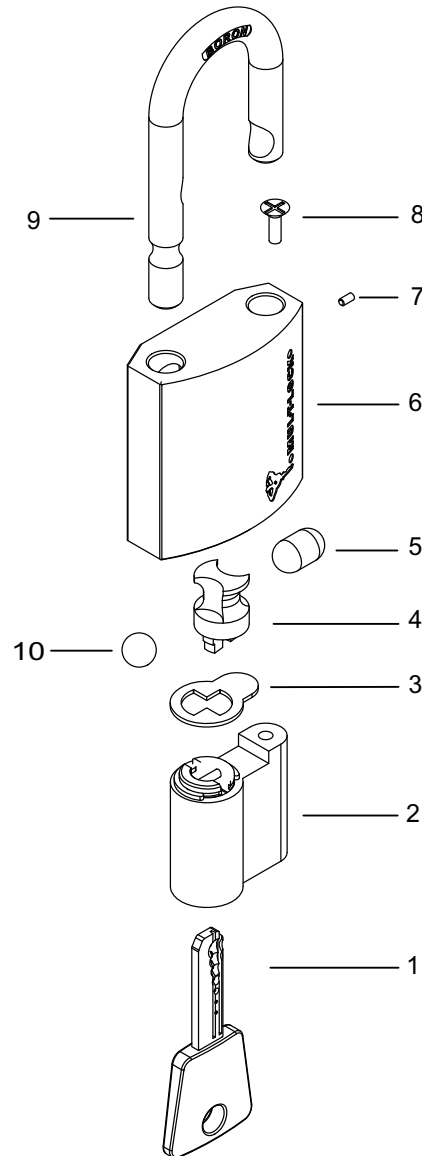


G Series Padlock



Padlock G-47



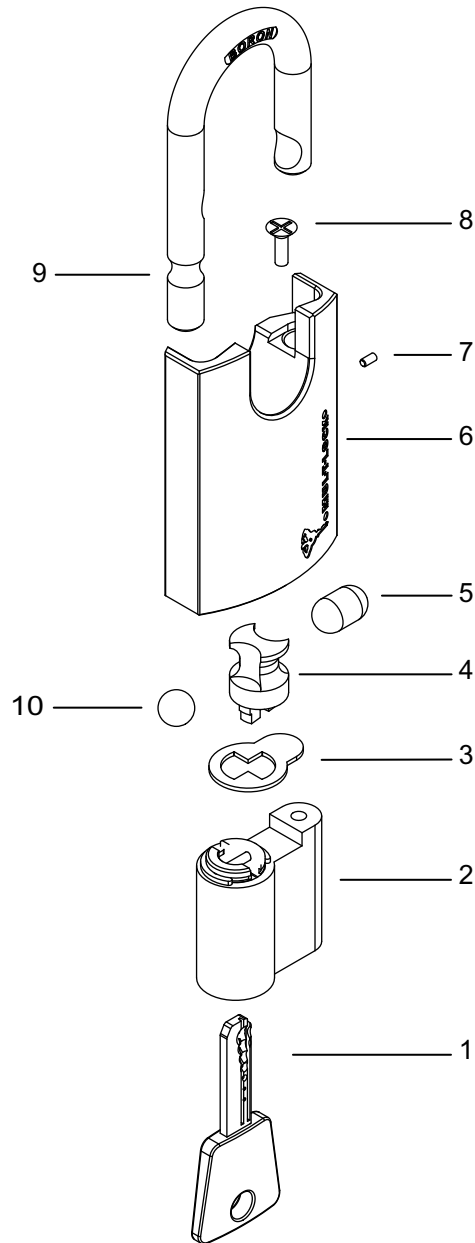
No.	Part	No.	Part	No.	Part
1	Key	5	Latch*	9	Shackle
2	Cylinder	6	G-47 body	10	Ball bearing 8 mm
3	Cam limiter	7	Security pin		
4	Cam activator	8	Screw M4x10		

* Elongated ball bearing

G Series Padlock



Padlock G-47P



No.	Part	No.	Part	No.	Part
1	Key	5	Latch*	9	Shackle
2	Cylinder	6	G-47 body	10	Ball bearing 8 mm
3	Cam limiter	7	Security pin		
4	Cam activator	8	Screw M4x10		

* Elongated ball bearing

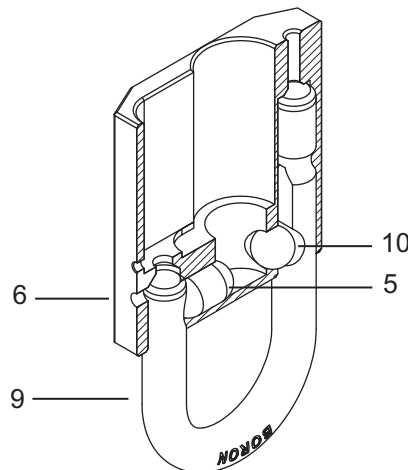
G-Series Padlock

Assembly Instructions

These assembly instructions are intended to walk you through the assembly process, starting with the padlock disassembled. If you start dismantling an assembled lock, please refer to the next page for instructions on removing the security pin.

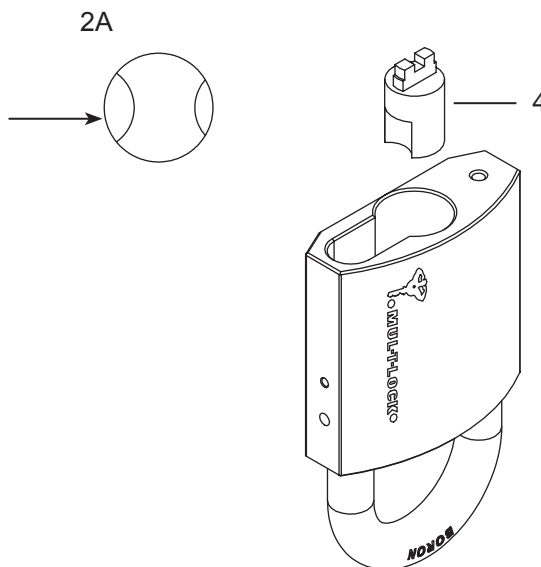
1

- With the shackle (9) inside, hold the padlock body (6) upside-down.
- Push the two elongated ball bearings (5 for G-55 padlocks; 5 & 10 for G-47 padlocks) through the cylinder opening, one per side.
- NOTE: For G-47 models, ensure that the elongated ball bearing (5) is placed in the direction of the short leg of the shackle (2A).



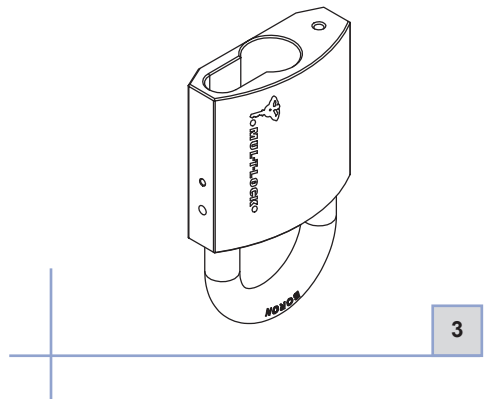
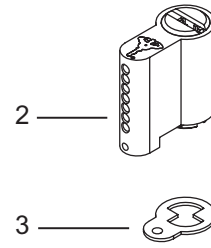
2

- Insert the padlock activator via the cylinder opening.
- NOTE: For G-47 models make sure that the deepest groove is facing the short leg of the shackle.



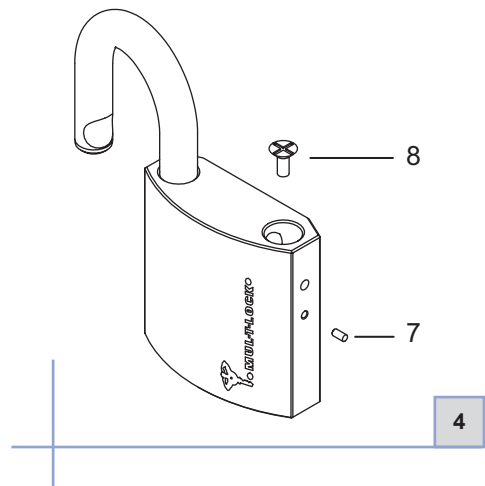
3

- Insert the cam limiter (3), ensuring that it engages with the protrusion of the activator (4).
- Insert the cylinder (2) into its place, making sure that the key will be at it's removal point when the padlock is locked.



4

- Put the cylinder holding screw (8) into its place. In order to prevent it from working loose, secure it with a drop of "LOCTITE".
- For additional safety, use the security pin (7) as described on the next page.

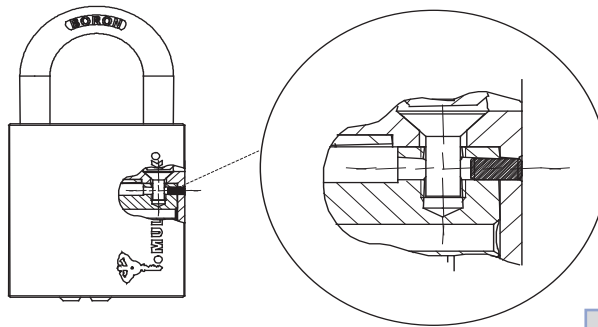


Security Pin

Assembly Instructions

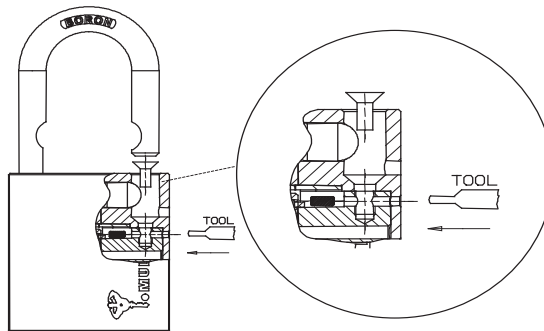
1

- Unlock the padlock with the operating key. Reach for the cylinder mounting screw through the shackle hole with a Philips screwdriver, release and remove it. This will not release the cylinder, which is still held by the security pin.



2

- Once the screw is out, use a punch and drive in the pin, which will fall into the cavity above the cylinder. The cylinder can now be removed, and you can recover the pin for re-assembly.



3

- Assemble the cylinder in position with the mounting screw and tighten. Check the lock for correct operation. Once confirmed, drive the security pin home with a small hammer. The pin end should be flush with body outer surface as per Figure 1.

