

Finishes Available - Commercial & Industrial Locks



05
(US03)
Bright Brass



06
(US04)
Satin Brass



09
(US5)
Antique Brass



11
(US9)
Bright Bronze



12
(US10)
Satin Bronze



13
(US10B)
Dark Bronze/
Oil Rubbed



18
(US14)
Bright Nickel



19
(US15)
Satin Nickel



20
(US15A)
Antique Nickel



22
(US19)
Flat Black



24
(US20A)
Dark Bronze/
Clear Coat

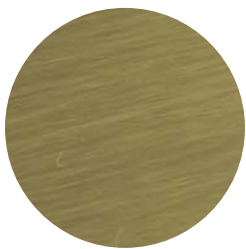


25
(US26)
Bright Chrome



26
(US26A)
Satin Chrome

Finishes Available - Residential Locks



05
(US03)
Bright Brass



19
(US15)
Satin Nickel



10
Satin Brass
Blackened



09
Antique Brass

Note: Product appearance may differ from this chart as a result of the differences in plated versus printed materials.