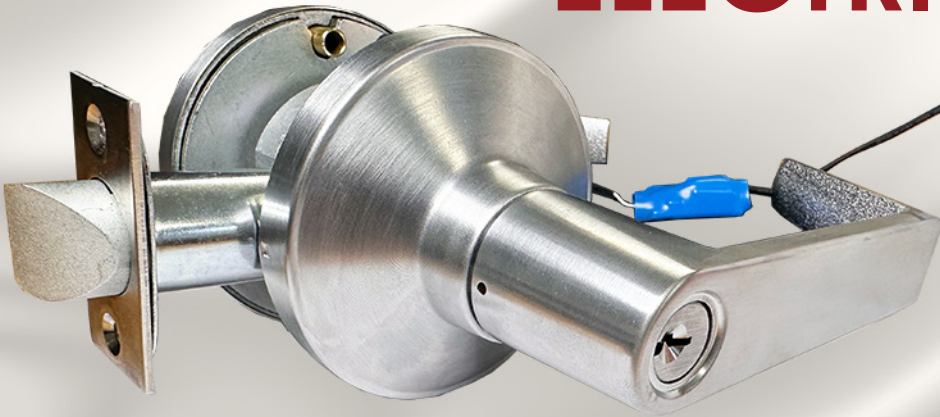


HEAVY DUTY ELECTRIFIED LEVER

CL190-HD SERIES



CMACL190-HD-EU-L6-626-SC

The **Command Access CL190-HD Series** is a low-energy motorized lever control cylindrical lock ideal for any continuous duty application or condition requiring low surge and hold current. It is built on a heavy-duty cylindrical lock chassis and is made for high-use environments. The whole assembly is produced right here in the US. Our motor module auto-detects anything from 11-30VDC & includes a dip switch to change from Fail Safe (EL) to Fail Secure (EU).

When you choose the CL190-HD, you can be assured that it will work for your unique needs and hold up to rigorous daily use.

Features:

- Low maximum current draw 300 mA: Use more locks on a single power supply.
- Low holding current 100 mA: Reliable operation and meets sustainable consideration.
- Fail Safe(EL) and Fail Secure(EU) field selectable with flip of a switch.
- Multiple lever styles and finishes available.
- Available SFIC or LFIC (Schlage): Cylinder not included.
- Available with Schlage C type keyway standard
- Request-to-exit built-in.
- 5-year "No Hassle" warranty.

[Ask an IML Representative for more information and product availability.](#)