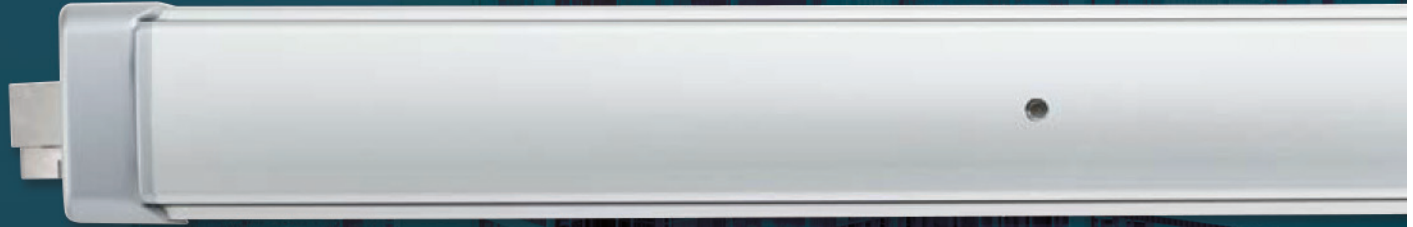




ASSA ABLOY

The Exit: Bar Raised



Discover The **NEW** Adams Rite EX Series Exit Devices

The new Adams Rite EX Series Exit Devices feature flexible, robust designs, with simple and adjustable installation, providing a superior user-experience, all wrapped up with beautiful aesthetics.

The EX Series launch includes four models including the EX88 Interlocking Rim Exit Device, a robust and unique bolt design that interlocks the door to frame for enhanced strength and durability, the EX89 Pullman Rim Exit Device which is compatible with Adams Rite preload capable 74R1 Electric Strikes, the EX76 CVR Exit Device with concealed adjustable rods and latching assemblies designed for easy installation, and the EX80 Series Dummy Push Bar whose flexible design comes standard with two monitoring switches and is field selectable for active or inactive configuration.



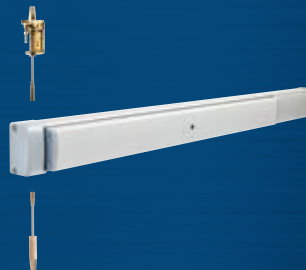
EX88 Interlocking Rim Exit Device

Unique bolt design interlocks door to frame for enhanced strength and durability.



EX89 Pullman Rim Exit Device

Compatible with preload capable Adams Rite 74R1 Electric Strikes and surface mounted HES 9600 Electric Strikes.



EX76 CVR Exit Device

Adjustable concealed rods and latching assemblies designed for easy installation.



EX80 Dummy Push Bar

Flexible design standard with two monitoring switches, field selectable for active and inactive configuration.

Visit us on-line at www.imlss.com or ask an IML Representative for more product details.

arizona - california - colorado - nevada - utah - washington

