



## Durable Commercial Grade Hardware

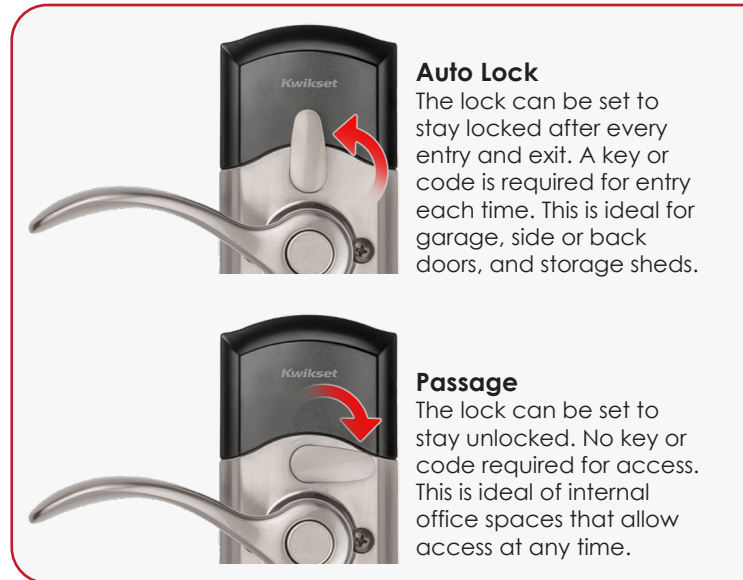
Introducing the SmartCode 955 commercial grade electronic lever. This lever has been tested to 500,000 cycles and is BHMA certified. It has the strength and durability optimized for commercial applications, with the convenience of keyless entry.

### Features

- Robust metallic design for enhanced durability
- BHMA Commercial grade 2 certified
- Highest residential security rating
- 3 year battery life
- Reversible lever to fit lefthand or right-hand doors
- Property managers can disable the Passage Mode so that it auto-locks every time and a key or code is always required for entry. This is ideal for restrooms in restaurants and gas stations.

### User Codes

- Up to 30 user access codes that can be customized for sharing with employees, maintenance personnel and service professionals.
- User can program a one time user code for emergencies, which deletes after first usage.
- For added convenience, property managers can program the lock from the outside with a programming code.



#### Auto Lock

The lock can be set to stay locked after every entry and exit. A key or code is required for entry each time. This is ideal for garage, side or back doors, and storage sheds.

#### Passage

The lock can be set to stay unlocked. No key or code required for access. This is ideal of internal office spaces that allow access at any time.

Hot Numbers: 162024, 162025, 162026, 162027

Ask an IML Representative for product details or visit us online at [imlss.com](http://imlss.com)

Arizona - California - Colorado - Nevada - Texas - Utah - Washington

